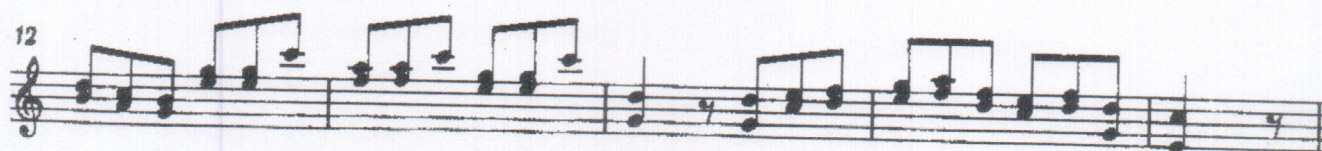


Allegretto

Andante



Minore



D.C. al Maggiore



L. Breunler,

6a in F# (opcionalmente)  
6th in F (optional)

IX  
*Omaggio a Szymanowski*

**Lento assai**

Musical score for "L'Espresso" by Francesco De Gregori. The score is in 4/4 time and features a guitar accompaniment. It includes a key signature change from C major to D minor at measure 12. The score is divided into sections A and B. Section A starts at measure 4 and ends at measure 11. Section B starts at measure 15 and ends at measure 23. The score concludes with a repeat sign and the instruction "dal § al FINE" at measure 24. Dynamics include mp, p, and pp. Performance instructions include "sempre legato", "legato", "p accompagnando l.v.", and "pp (eco)". The score is marked with various fingerings and articulations.



## PRELUDIO N. 2

1. 6227.20 97

Andante espressivo (♩ = 56)

6ª en RE

*mf*

*Mosso* (♩ = 88)

*f* *Pizz.* *p* *f* *arm. 12*

*poco rit.* *Tempo I* *mf*

*Pizz.* *pp*



3

5

10

15

21

26

31

37

43

Minore

*D.C. [al Maggiore]*

**Chanterelle**



20044771

J. Cardoso

AB 555

Bravo 120

# 9. Milonga, „Citlallin”

♩ = 50

1/2 BV.....

1/2 BIV.....

1/2 BIII.....

1/2 BII.....

1/2 BI.....

1. 2/3 BIV..... 2/3 BIII..... 2.

1/2 BV.....

1/2 BIII.....

1/2 BI.....

1/2 BIII.....

1. 2. BV.....

Da capo



- VII -

3. DUARTE  
OP 140

$\text{♩} = 104$   
*Allegramente*

CVII  
f  
CIV  
p  
CIV  
p  
CVII  
CV  
CIII  
CVIII  
CVI  
f  
esitante  
a tempo  
CII  
CIV  
mp  
CV  
CVII  
CIX  
CX  
a tempo  
poco rit.  
f  
25  
CIV  
CVII  
senza rall.  
p  
29



Russo

N. Paganini

N. Paganini

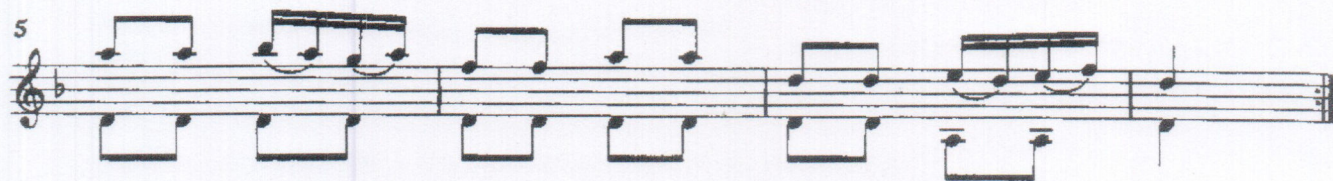
AB 55 BIZARD 103

Andantino

18



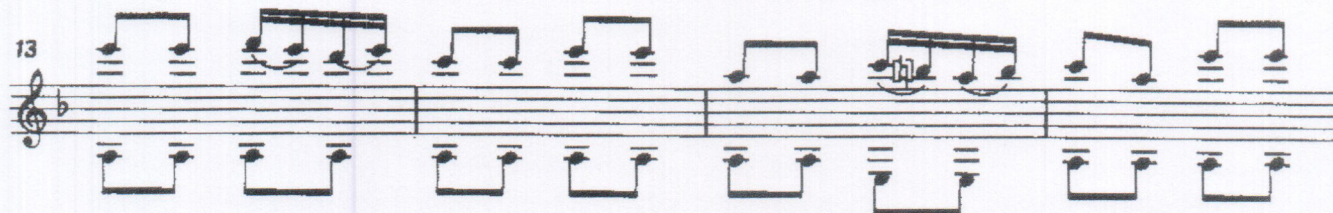
5



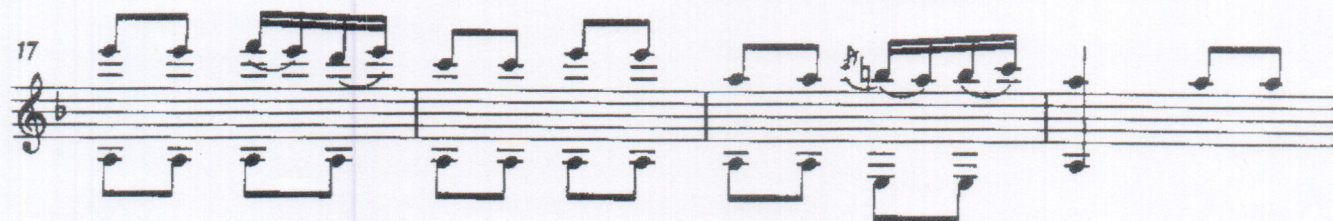
(8)



13



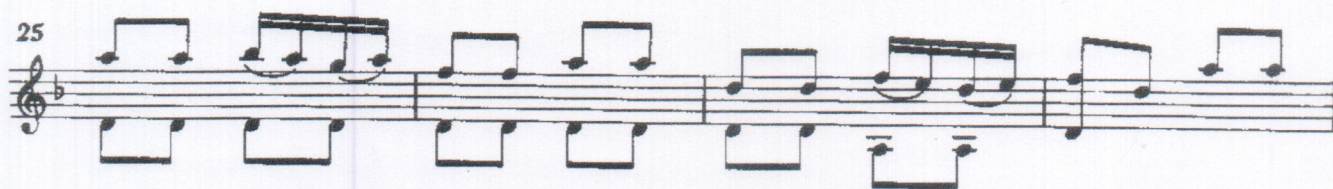
17



21



25



29

